

FOREWORD

2022 S.P.S. - SCHOOL MAGAZINE

We would like to take this opportunity to express our heartfelt gratitude and appreciation to all parents for your endless and continuous support in what has been a very challenging year. It has been heart-warming to see the support and love you give to your children by the excellent turnout at open days, as well as sporting events and interviews.

Toward the end of Term 1 there was a nationwide lockdown, due to the spread of the COVID-19 virus. Packages were available for every student for the ensuing weeks. Face to face tuition was maximised for the remainder of the year. Our numbers had diminished but Management and Staff were very happy to greet returning students. Children revised work and commenced the study of new topics including the study of a Commonwealth country in preparation for beautiful and educational displays, performances and cooking. This was showcased for parents and families in the middle of Term III. As a result of the hard work carried out, children attained an enriched knowledge of different cultures around the world. Great happiness and enthusiasm exuded from the children on the day, which was a resounding success.

Toward the end of Term II and Term IV it was deemed safe for children to again participate in sports Tournaments and go on field excursions to a variety of interesting places.

All the wonderful events can be viewed in class magazines. A colourful, vibrant photographic portrayal of the exciting activities of each class can be enjoyed.

Wishing our Samoa Primary families a very happy and especially healthy Christmas and a prosperous New Year.

Malō le Soifua Matua. Matagofie lenei avanoa e momoli atu ai le fa'afetai tele mai le taele o matou agaga, i le Mamalu o Matua ma Aiga ona o la outou lagolago malosi ma le titi fai tama, ua i'u ma le manuia ai lenei tausaga fa'alea'oa'oga. E ui na fa'asalavei le Koviti ae le'i mae'a lelei le Kuata muamua, a'o lenei ua tatou aulia fa'atasi le fa'aiuga o lenei tausaga, 2022.

Maeu le Agalelei o le Atua. Manaia fa'aiuga o suega a le Vasega 8, i le aga'i atu ai i lea tausaga fou. Malo lava le lagolago, malo le tapuai aemaise lava talosaga mo le manuia o fanau uma ma le Aiga Faiaoga. Viia le Atua tumu i le Alofa.

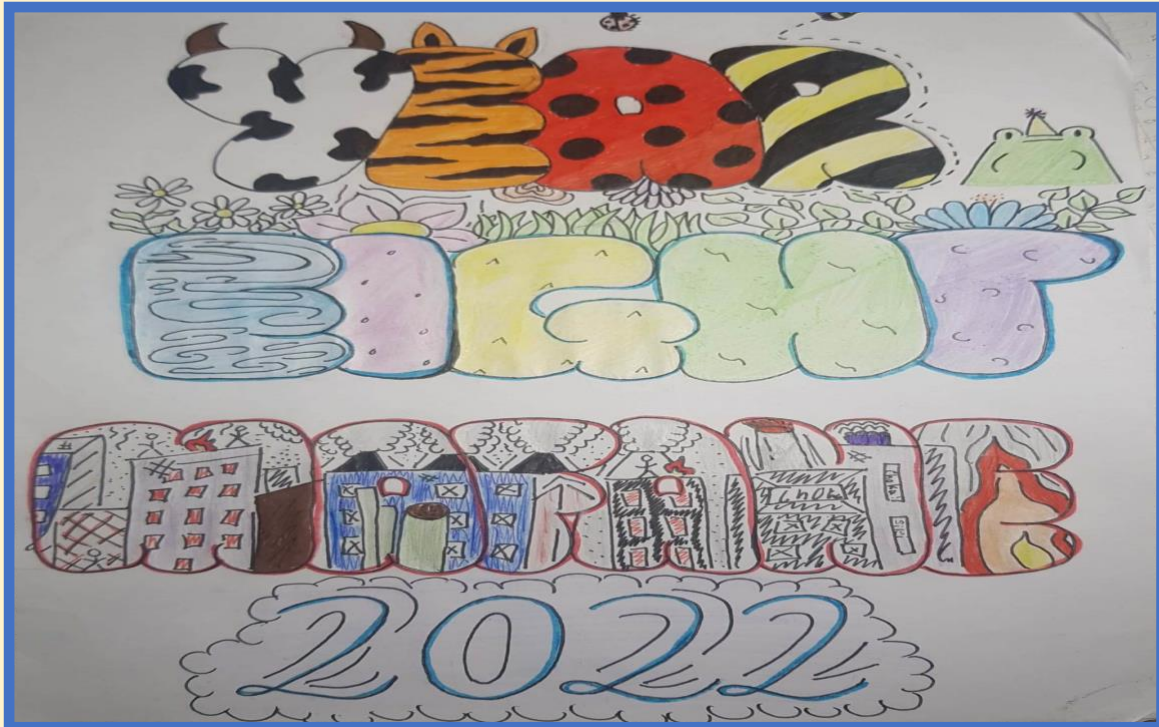
Na mataina foi fa'aliga o atunu'u eseese o le lalolagi na a'oa'oina e le fanau, aemaise foi mea taumafa na kukaina ma fa'atauina i lenā aso. Talitonu, a leai outou matua matou te tua atu i ai, e lē manuia lenei fa'amoemoe. Fiafia tamaiti aoga uma o le tatou laumua talu ai lea fa'amoemoe.

Sa auai atu foi le fanau i taaloga o le soka, tenisi ma lakapi. Na fa'apea foi ona fa'amanuiaina fanau sa ta'aalo i nā faa'ga tama. Oka le tele o fa'ailoga tusi pasi ma ipu o siamupini na maua e au ta'itasi. Oka se fiafia mai o le Atua i si a tatou Aoga. Malō fa'afetai tapua'i ma lagolago mai.

O le Agaga fa'afetai e lē mavae, ae avea ia lenei Upu Tomua e fa'amanuia atu ai le Mamalu o Susuga a Faiaoga ma le Aufaigaluega Lagolago atoa le Ofis, le Fanau Aoga fa'apea le Pulega e fa'amanuia atu ai le Kerisimasi ma le **Tausaga Fou, 2023 Ia Manuia.**

Fa'afetai tele.

Pulega / Management



FOURTH ROW: Joseph Gabriel, Seth Imo, Robert Stanley, Reinhard Teueli, EnefatuTunupopo, ApeluGatoloai, Mark Fa'afili Paul, Alex Pala'amo

THIRD ROW: Bayan Moaila, Fa'au'ugaPetaia, SamueluNu'usila, Anthony Time, John Andrew Chan-Chui, Titimanu Simi, Neva Neva

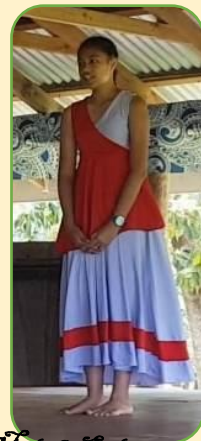
SECOND ROW:Ioanna Galo, Clotilda Mailo, Lesina Wright, Gillian Soti, Madeline Fa'asi'i, TeuilaSo'o, SileiMailo

FRONT ROW: KaitlynAuvaa, Romaine Lam, David Yemoh, LaititiTaioalo, Melody Solomona

KYLIX



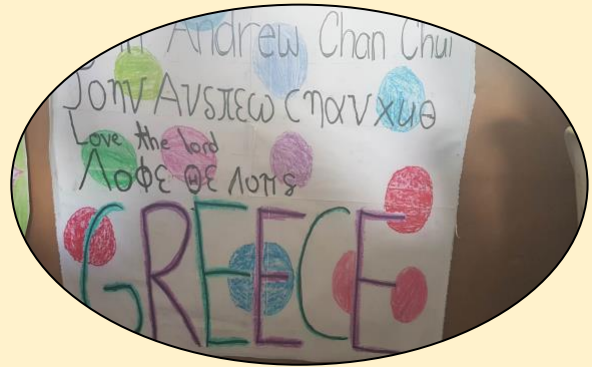
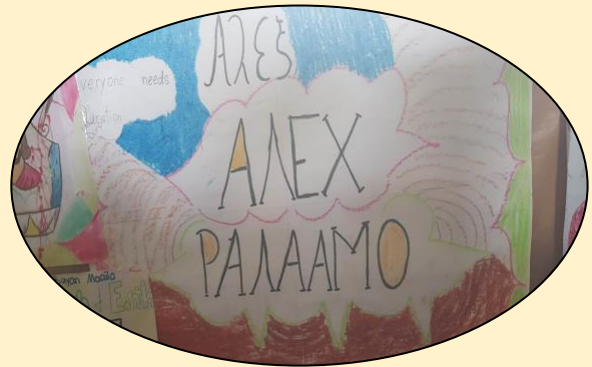
Ainslie Bentin



Melody Solomona

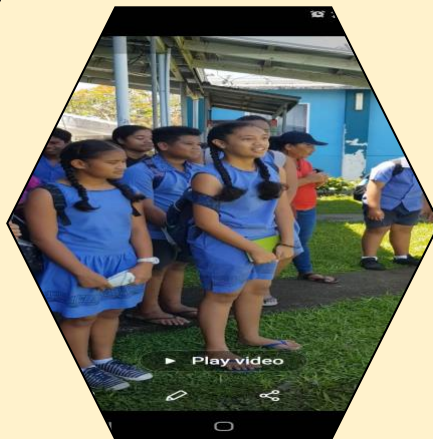


ՏԻՄՈՒԹՅԱՆՑ՝ ՊԱՊՈՒՆԵՑ ԾՐԱՊՈՒՆ ԼՊԵՏԵՊ ԳՊԵՏՈ ԳՐԵԵԿ





METEOROLOGICAL
STATION
TRIP





LEO CLUB COMMUNITY SERVICE FRIENDSHIP PARK

